



Perth & District Anglers Association

Scotland's Best Value Salmon Fishing



Dalguise

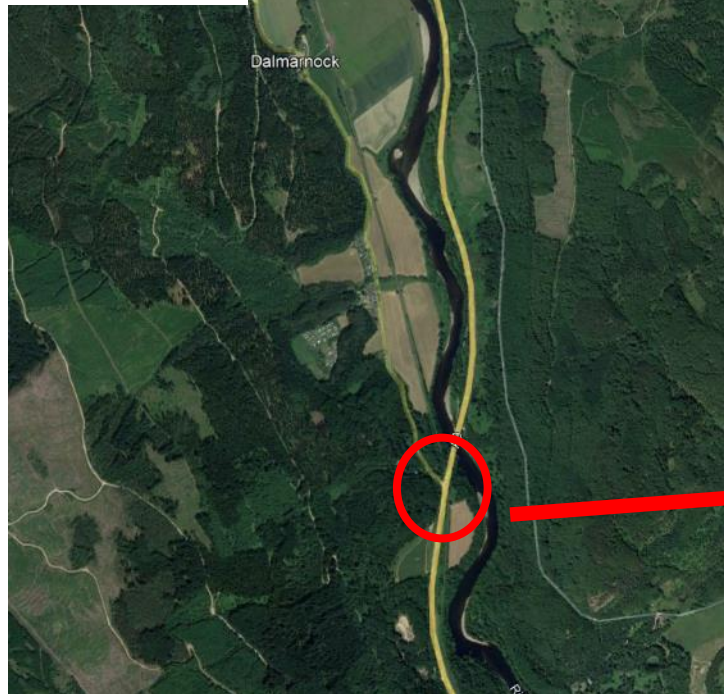


Getting there

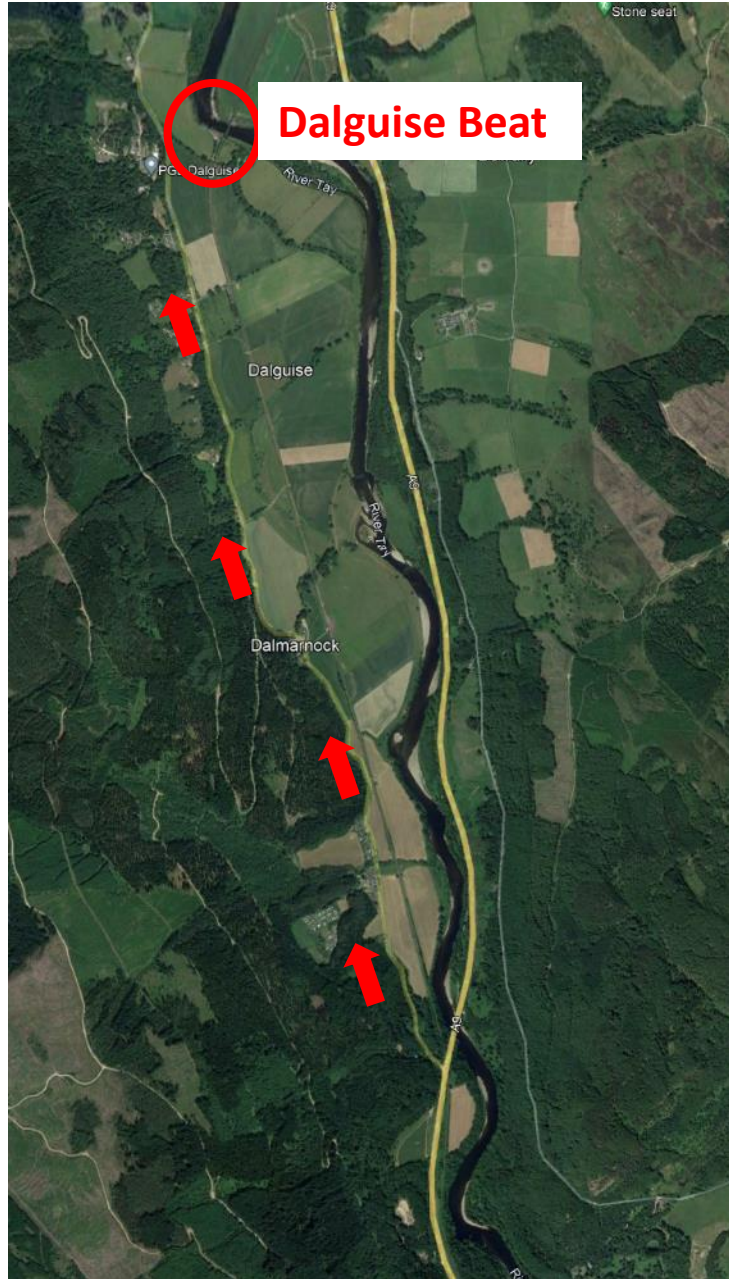
From South:



Take A9 North from Perth
Pass Dunkeld, then take road on
Left before the road crosses the Tay
Signposted Dalguse



Follow Road to Dalguise



Turning right here



Turning right here



Turn right here



Follow Track to Parking space



Parking - 1

Park here initially for ghillie instructions



From North

Heading south on the A9, from Ballinluig, you will pass the Blairgowrie turn-off on the left.
Keep going towards the bridge across the Tay.
Approaching the bridge you will see:



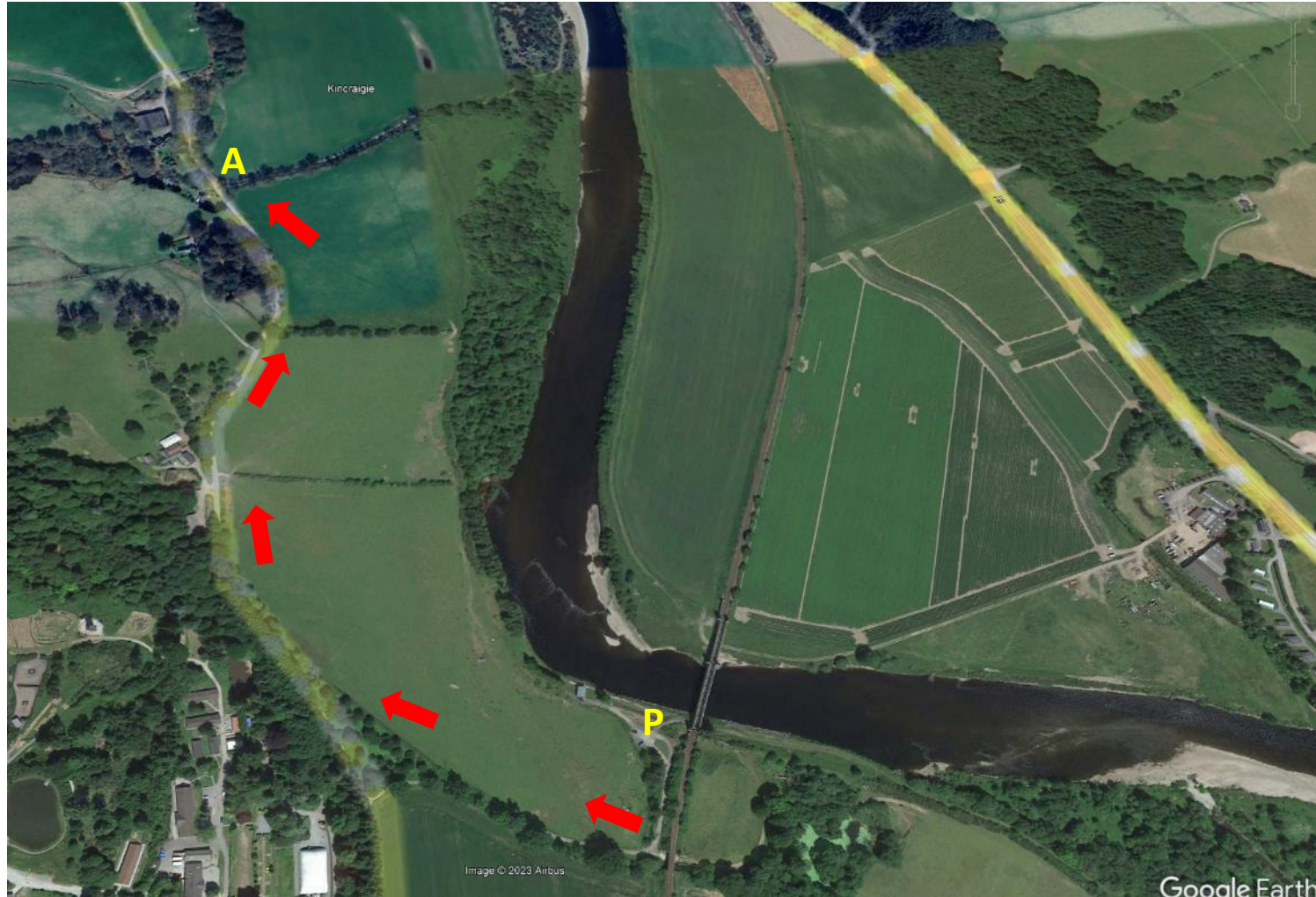
Busy road! Signal early

Turn right here



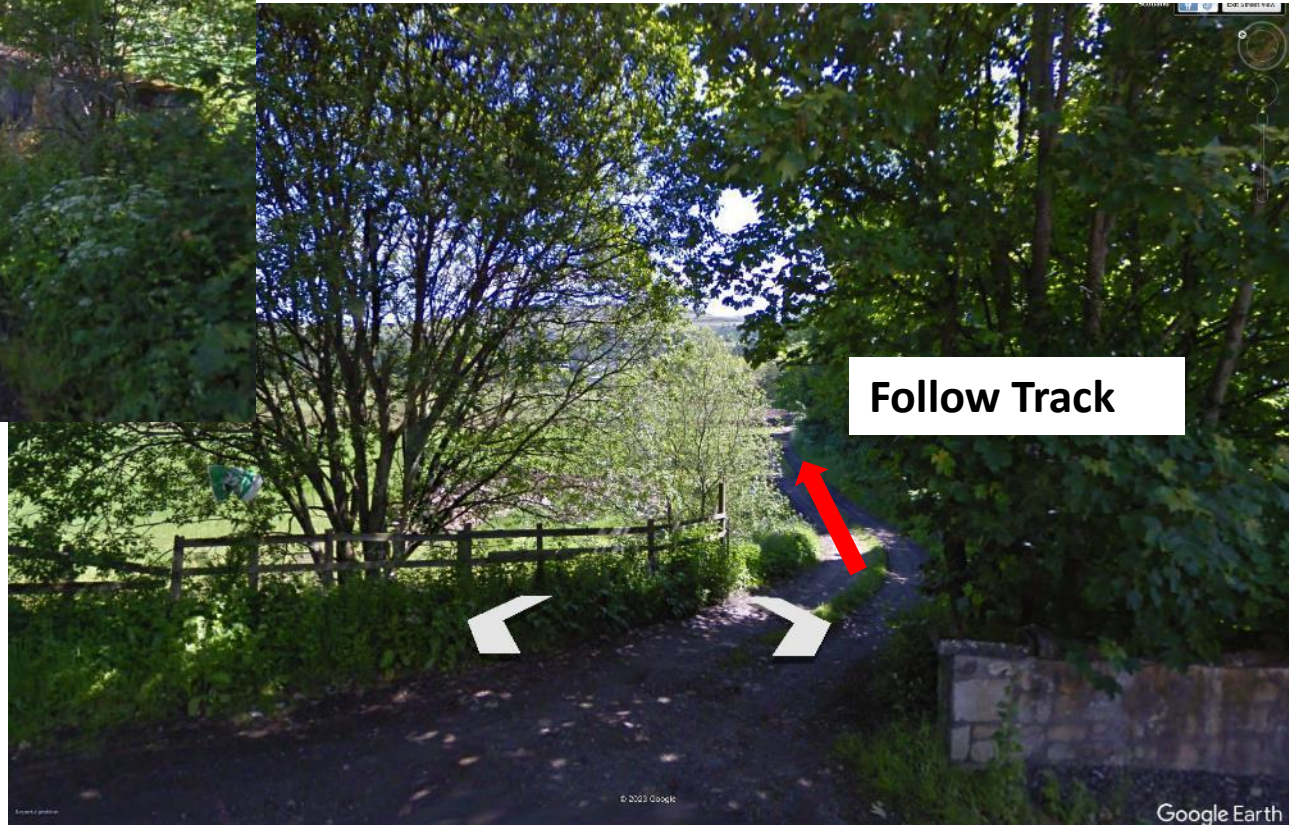
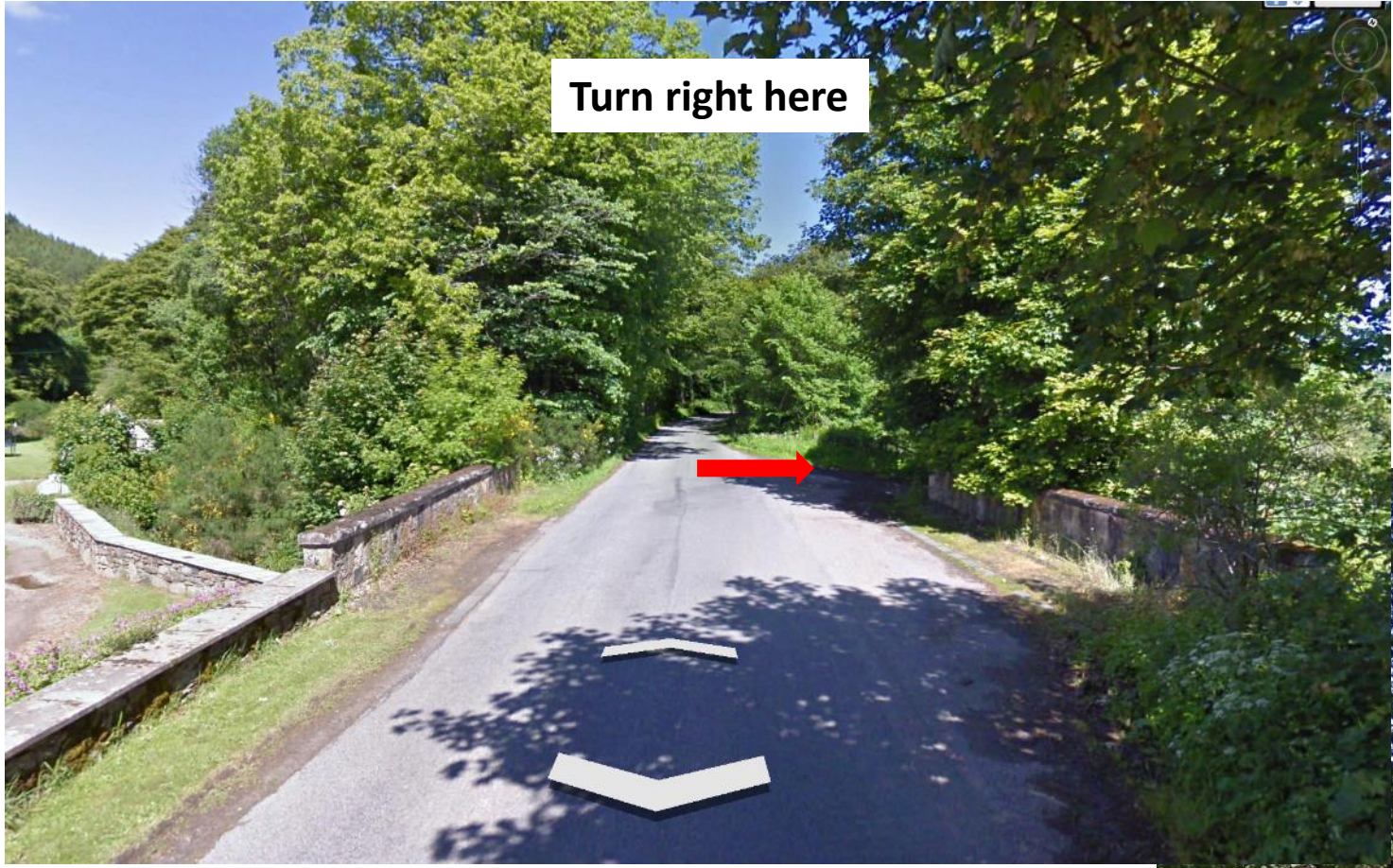
Parking - 2

If starting to fish at the upper March (Guay) you can drive to a parking spot a few yards from the march.
From the parking space drive to the main road and turn right towards Kinnaird. Follow road.
You will turn right at Point A



You will be turning right just past a cottage on the left
Cottage behind these trees







Follow Track to here

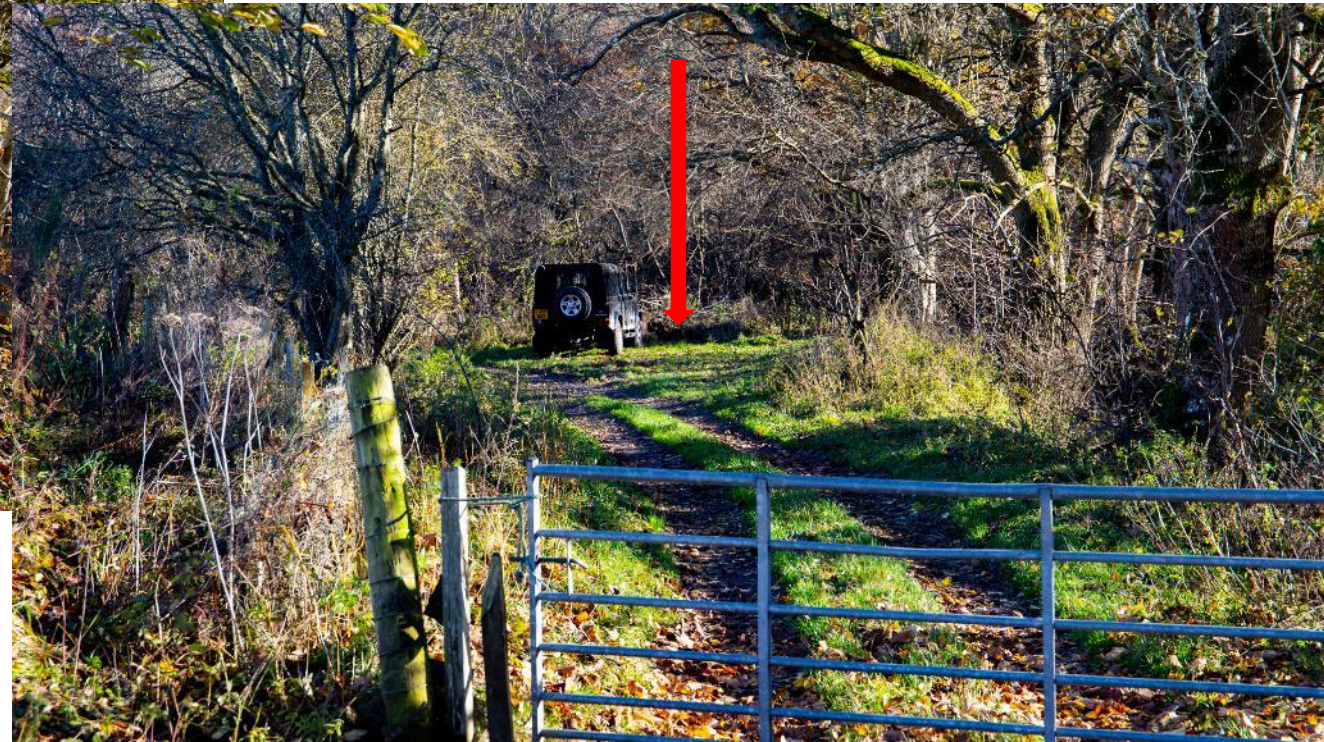
Kincraigie

Image © 2023 Airbus

Google Earth

Parking - 2

Follow the track until you come to another gate- leave as you find it after driving through.
The parking space is here



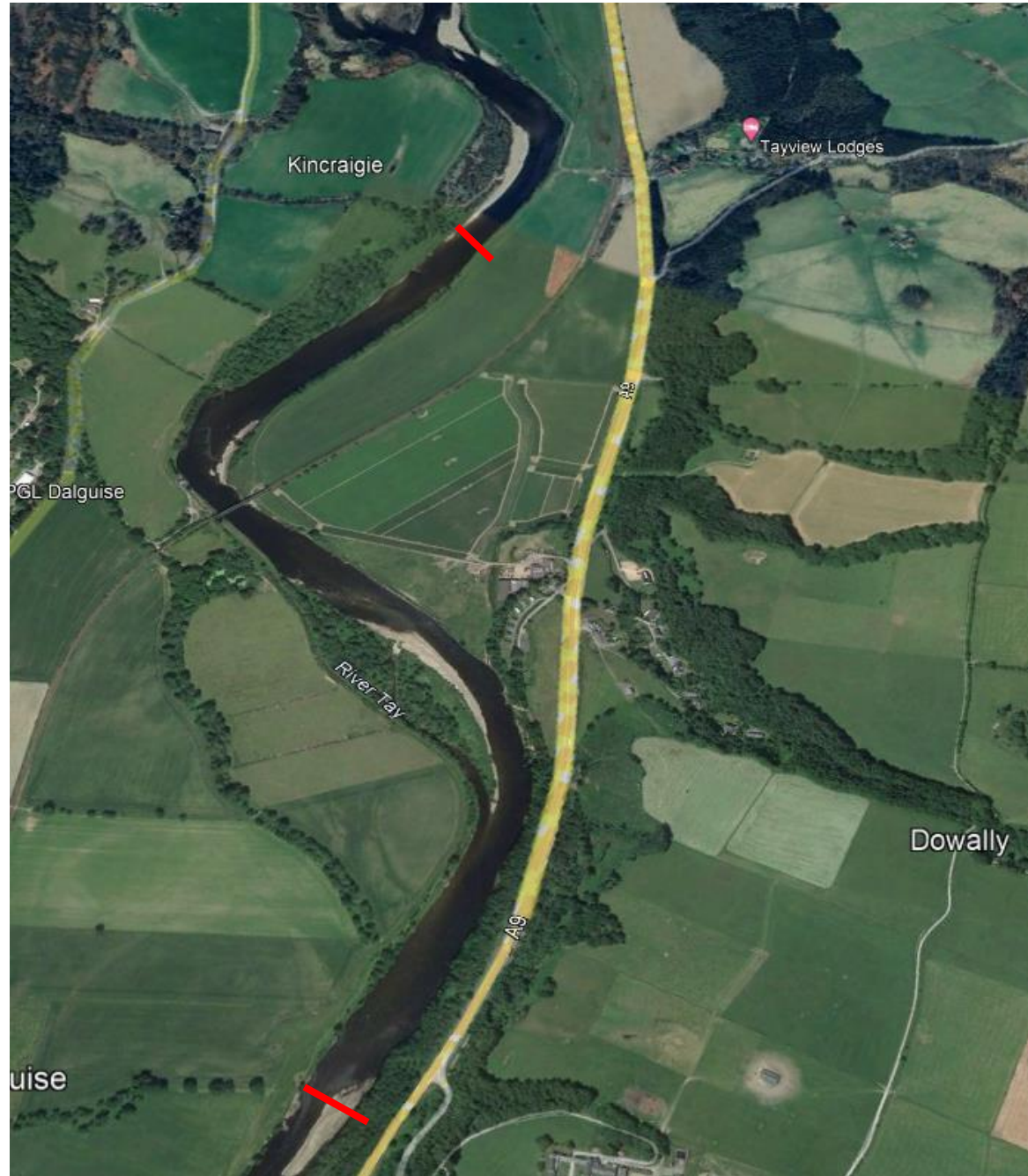
Park here and cross bridge and follow path to river



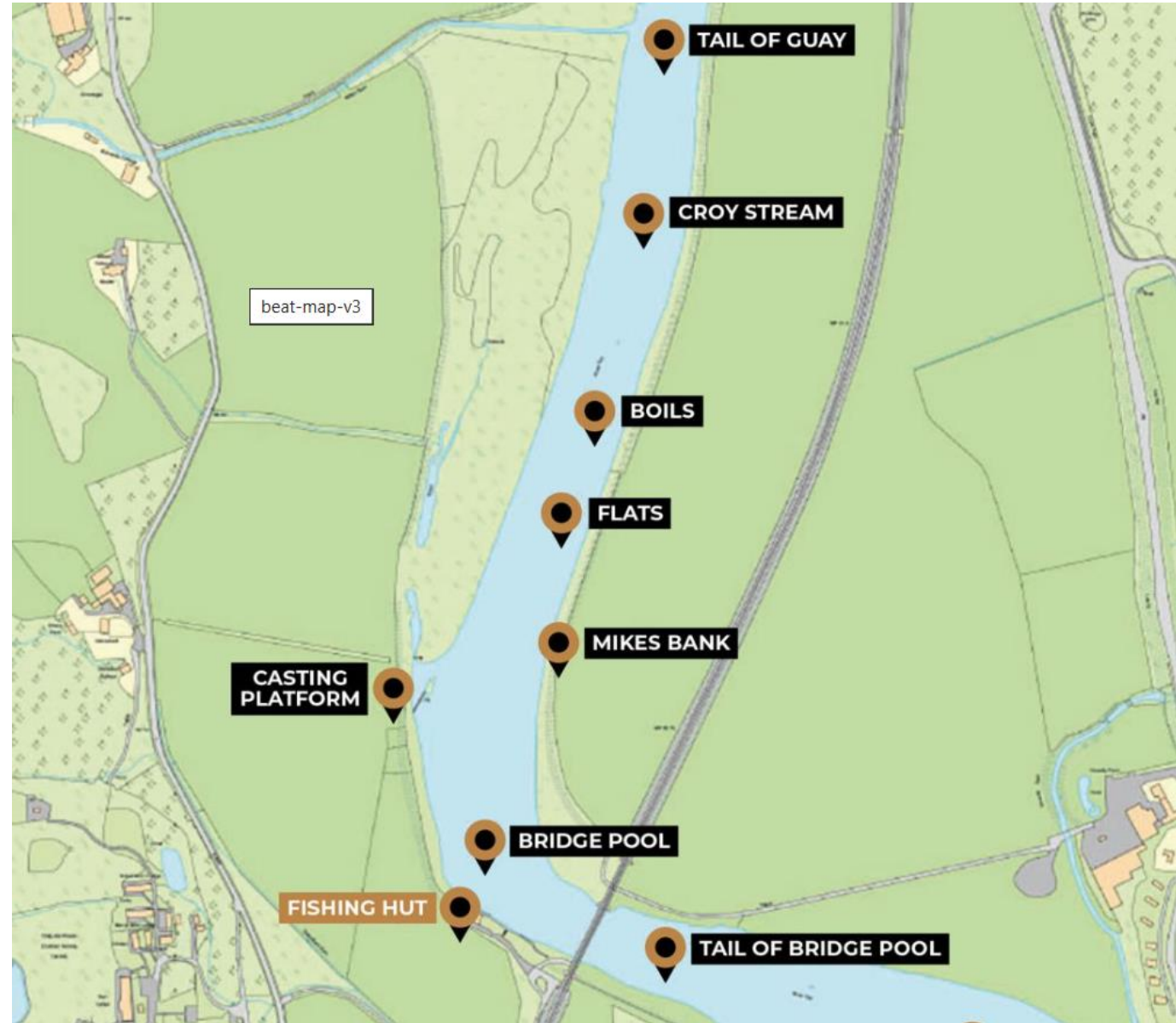
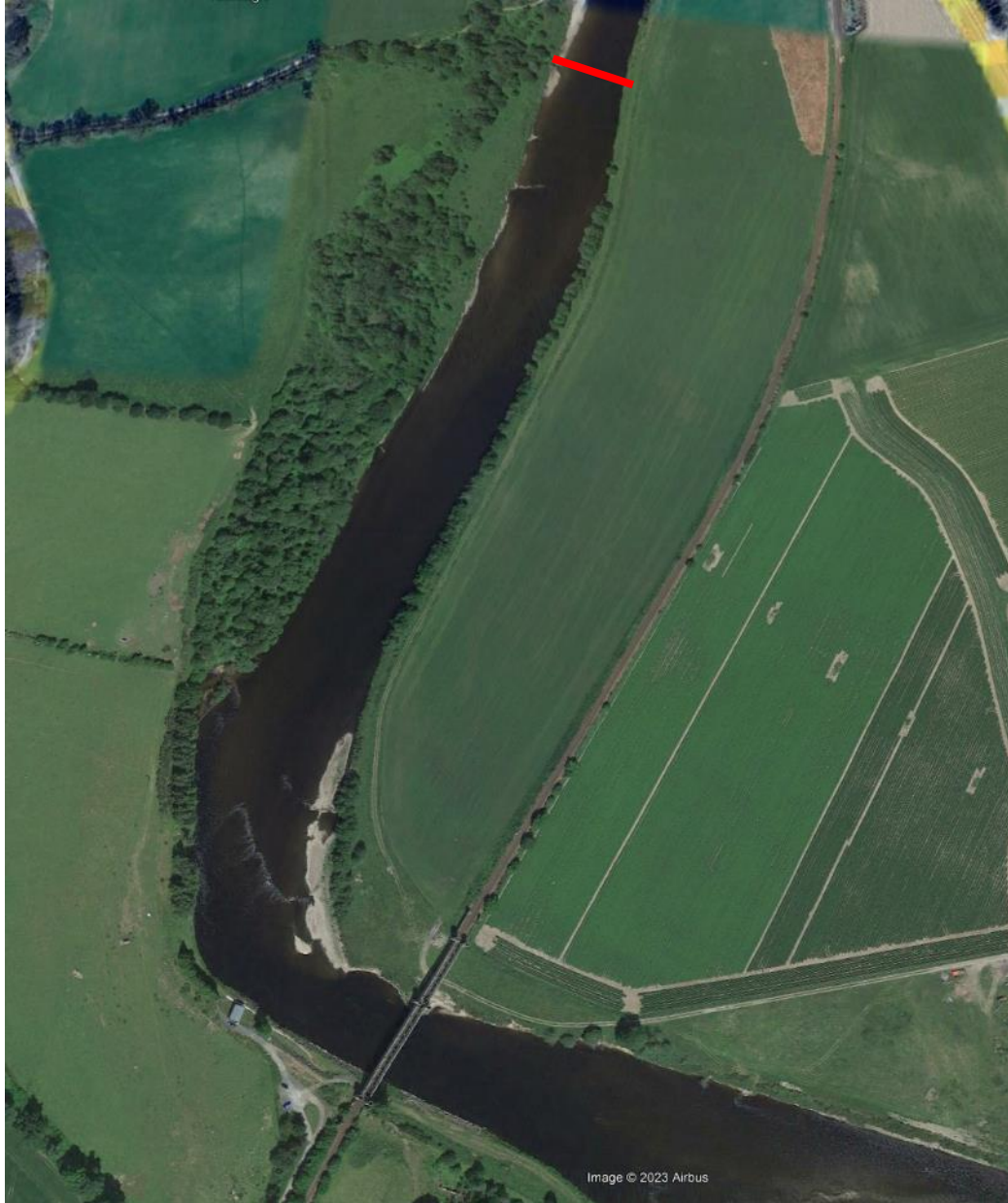
Beat Description

The Dalguise beat marches with Kinnaird at the top and with Dalmarnock at the bottom. It is 1.5 miles long, double bank although the left bank can only be fished in a small number of places.

The beat is suitable for fly fishing and spinning.



Upper Beat Pools



GUAY POOL

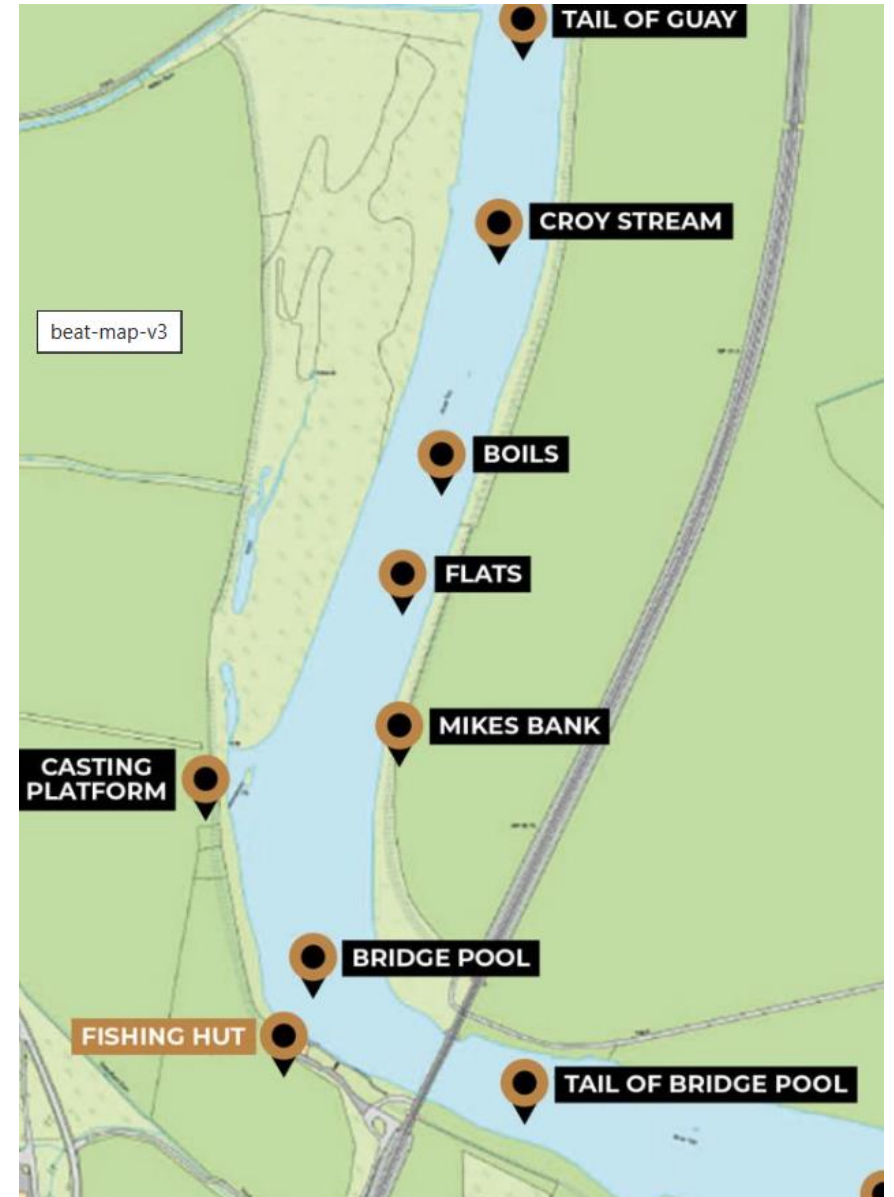
The pool fishes well in all heights of water from both left & right bank. Fishing starts at the mouth of the Kincairgie Burn on the right bank, fishing down towards the “big croy”. At the right height this pool is a delightful wade, particularly in low water. Fish can often be seen running hard up the left bank in the deeper water, but tend to drift toward the shallower bank in high water conditions. The pool starts off slow but quickly picks up pace, making it an ideal fly pool at all heights.

THE CROY STREAM

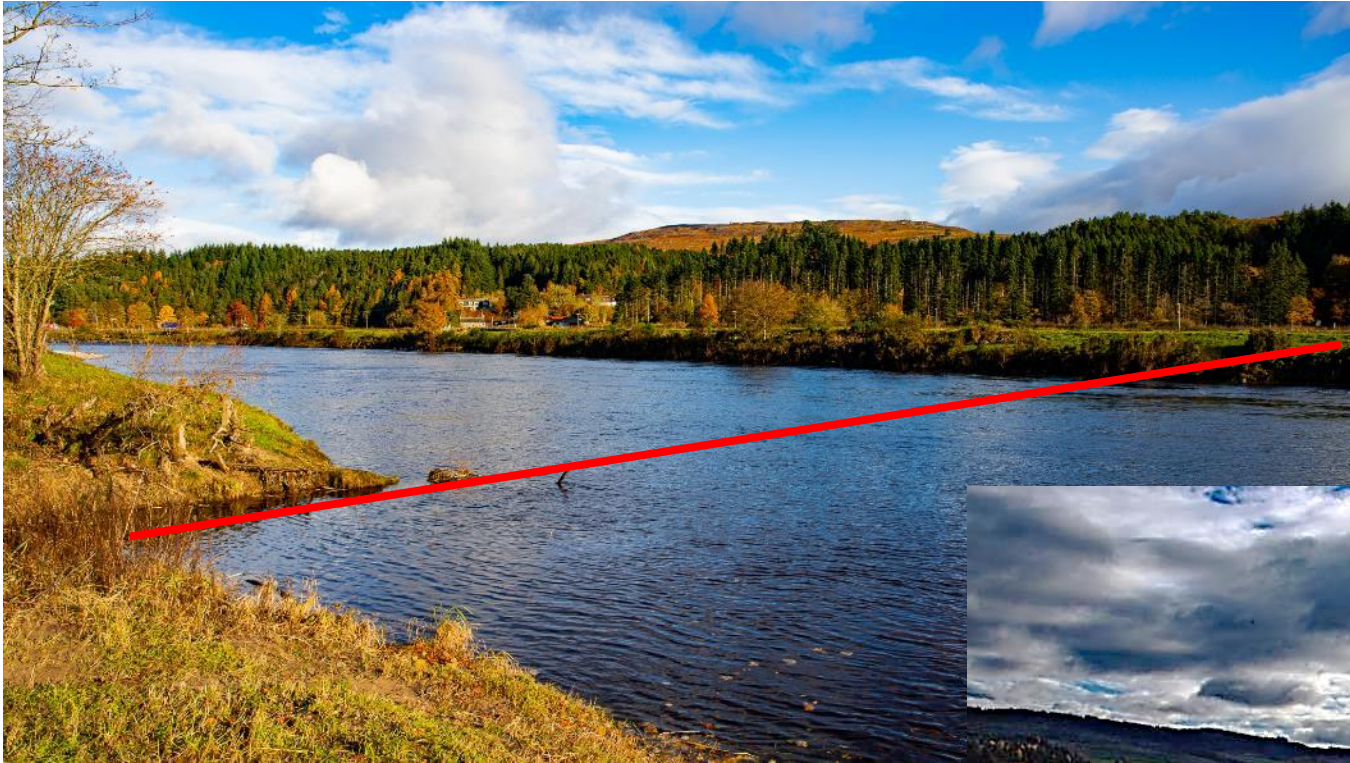
The Croy Stream fishes best in low water conditions. This is an excellent spot for summer grilse and sea trout, with fast flowing well oxygenated water and several great lies. If you do hook a big fish in the Croy stream, the back eddy from the big croy is a great aid in playing and landing.

THE BOILS

“The Boils” fish best in medium to high water, again the big stones out there are excellent lies and provide a great spot to intercept spring fish as they take respite from the current. Similar to the Croy Stream, this is a great spot at the backend for fishing in higher flows, with the “big croy” providing a bit a shelter from the main flow.



The upper March with Kinnaird



Looking downstream through Guay Pool from the march



The Croy Stream



Looking downstream from below the big croy through the Boils



THE FLATS

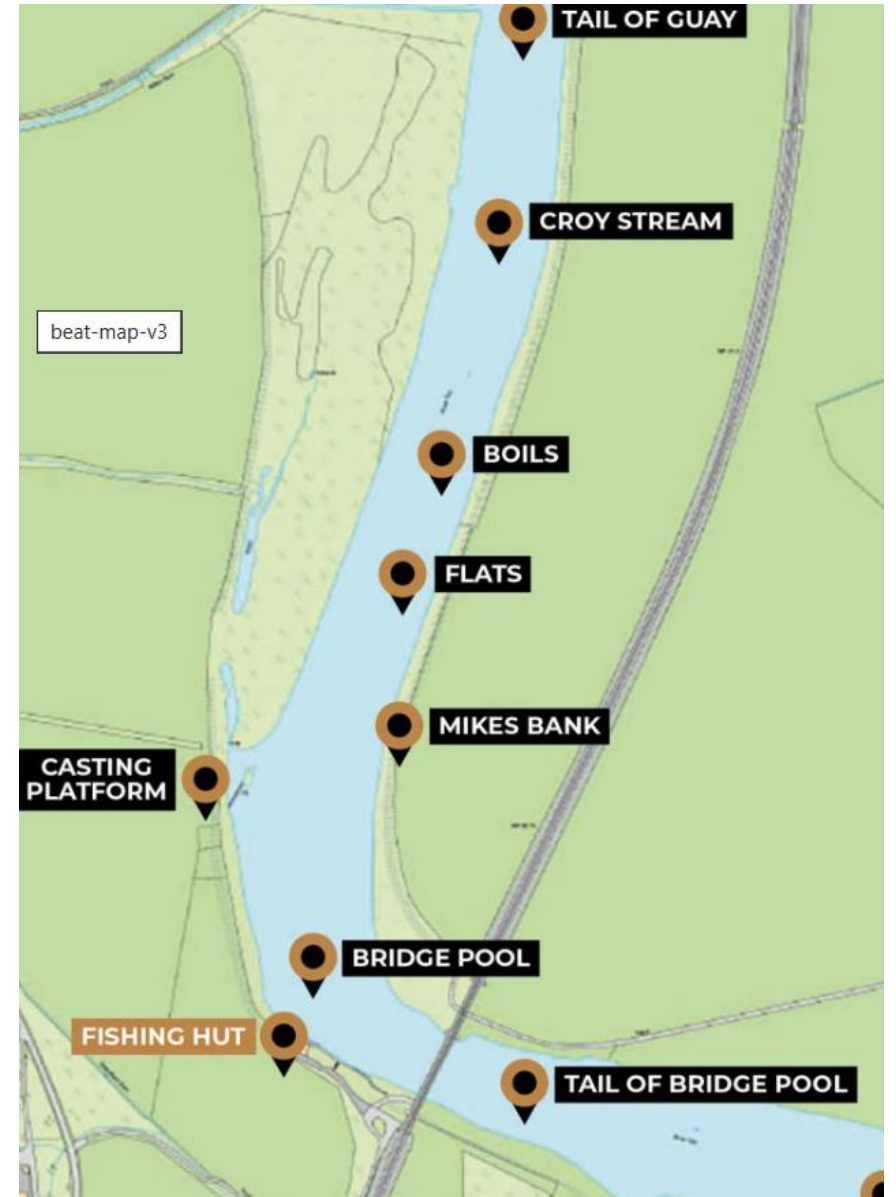
A great spot for summer sea trout fishing, best fished at night in low water, it's a tough wade but it is possible. The shelter from the trees of the left bank creates a perfect habitat for sea-trout.

MIKE'S BANK

An excellent high water pool, shallowed by gravel in the past but now coming back into its own following a thorough scouring out by winter floods. Right at the start of the treeline are some well placed rocks creating perfect lies.

THE CASTING PLATFORM

This spot is a classic squeeze. Fish moving through from Bridge Pool are often seen 'porpoising' as they leave its depths, making it a great spot for catching spring fish. Fishing best in medium to high water, the Casting Platform is built into soft sand, and so provides a unique opportunity to cover water that would otherwise be unfishable from the bank.



If you walk from the hut past the casting platform, and through the woods, following the path, you come to here
Point A



Looking down stream from point A you can wade in the right water to the small croy



Or you can turn left and walk upstream towards Guay



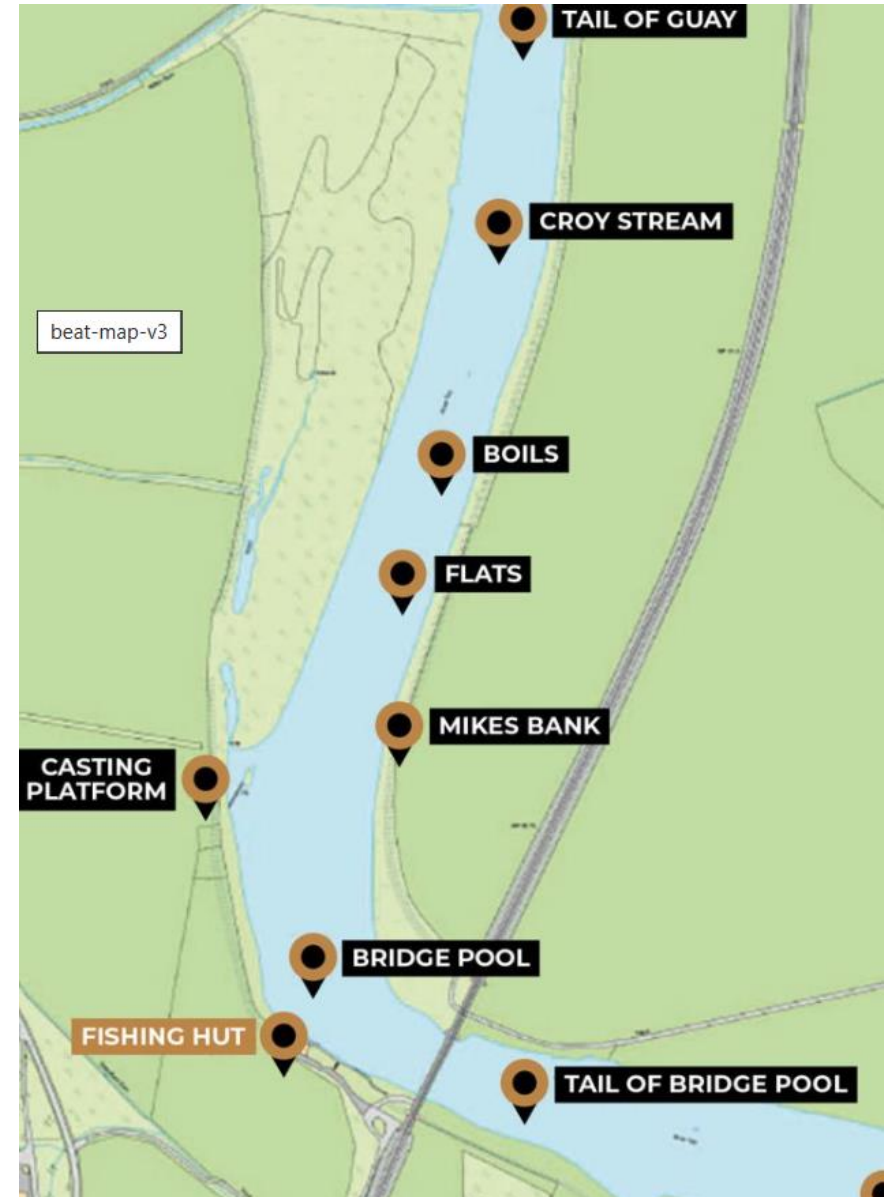


Casting Platform

Mike's Bank

THE BRIDGE POOL

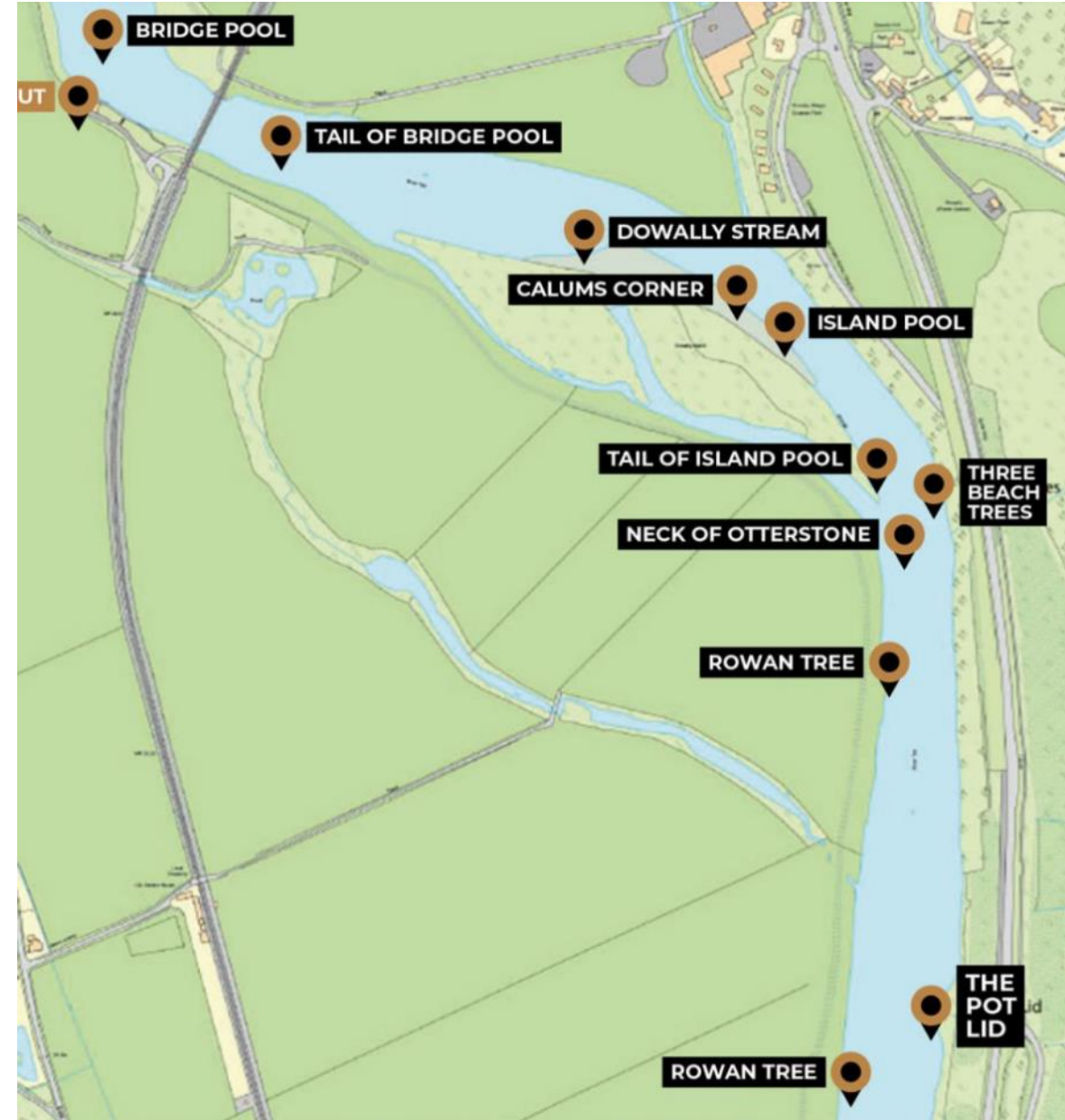
A definite Dalguise favourite, the Bridge pool has everything. Depth, shelter and attractive for all methods, Bridge Pool is consistently productive in all water heights. Just below the bridge is the deepest part of the beat, at least 30ft in depth. The Tail of Bridge pool below the railway bridge is a classic rest-stop for large fish coming over the croys, mirrored on both banks. Fishable at all heights, this pool exceeds in variable water levels and is fishable in all conditions – virtually droughtproof. From the left bank, wading in front of the croy in low water can be exceptional for the more adventurous fisher, however access from below the bridge is easy due to the reinforced banks. The pool is perfect for harling when conditions allow.



Bridge Pool



Lower Beat Pools



Getting to the Lower Beat

You can walk or you can drive! To drive follow this track from the Car Park



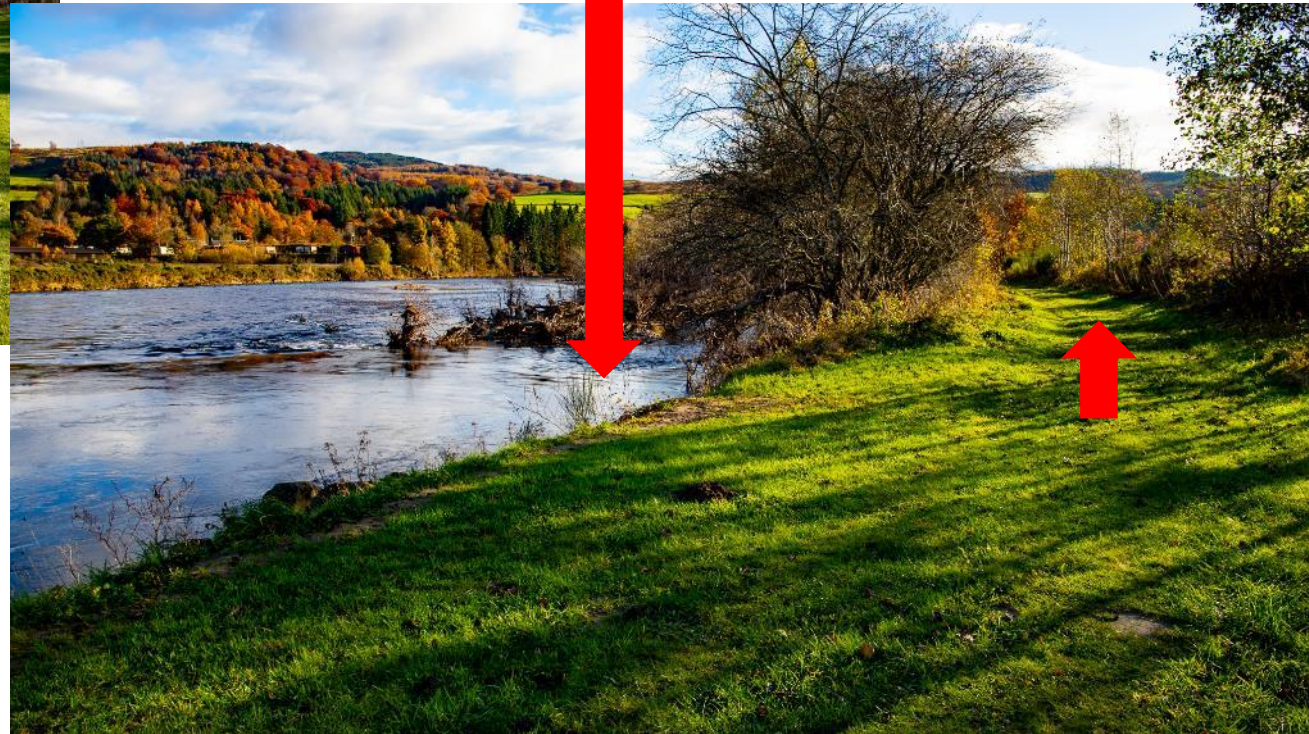
And drive under bridge (careful of rods!!) – Follow track



Follow Track



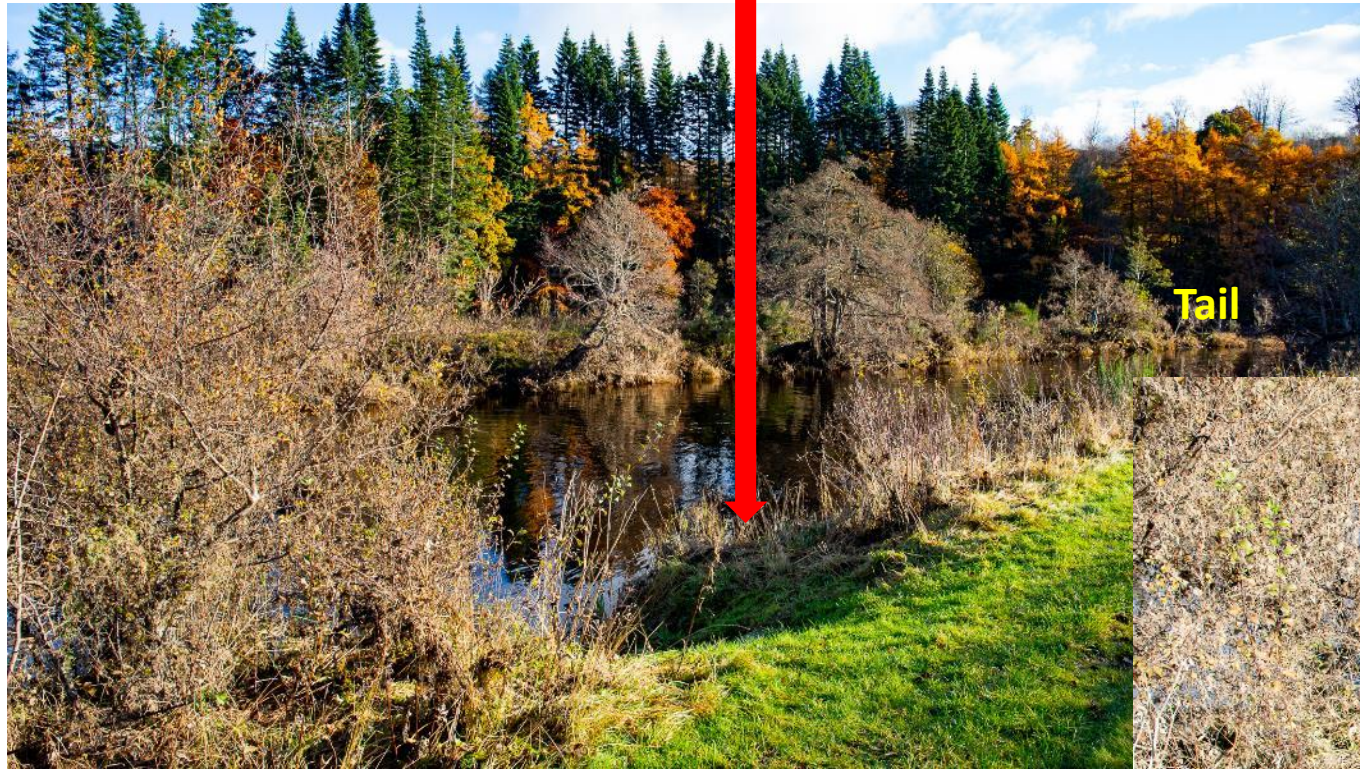
This is one place to get across onto Island depending on water levels.



Follow track but watch out for this hole (new, following October Storms)



On **the** track and nearing the tail of the Island you will see this gap



Steps to crossing point. Ghillie to advise



End of the Road and end of Dalguise Beat



Dalguise Lower Pools

Tail of Bridge Pool

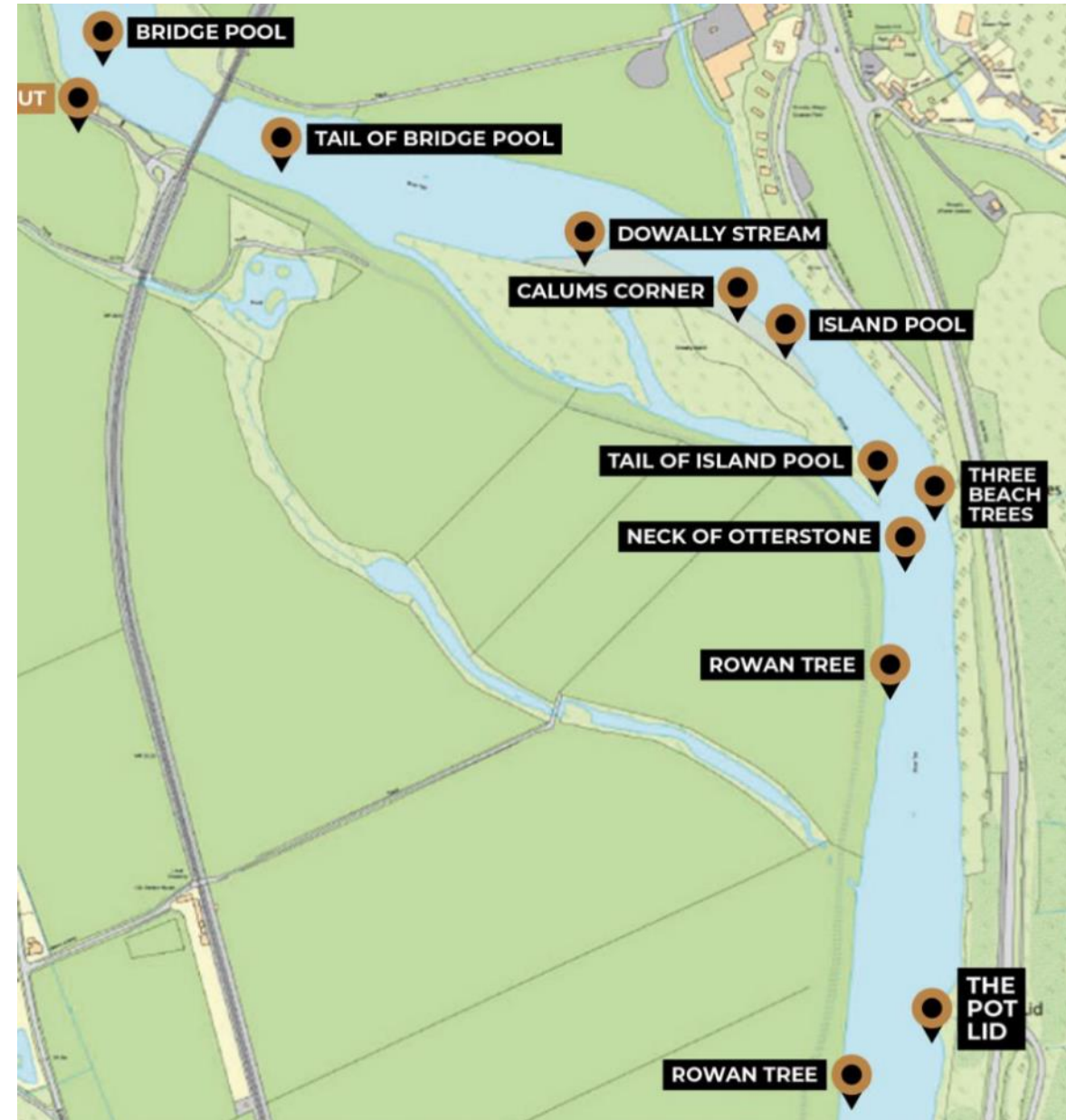


THE DOWALLY STREAM

A shallow streamy run, which fishes best in low to medium water. It fishes well from both banks and although fast at the top it levels out into wonderful fly water – every fly fishers dream. You feel every cast deserves a pull. This then leads onto Calum's Corner, a low water pool best fished from the Island side.

THE TAIL OF THE ISLAND

A classic fly fishing pool, great wading and a perfect pool to intercept those running fish. Fishes best in low to medium flows, a pool favoured by most Dalguise regulars and fly fishing aficionados.



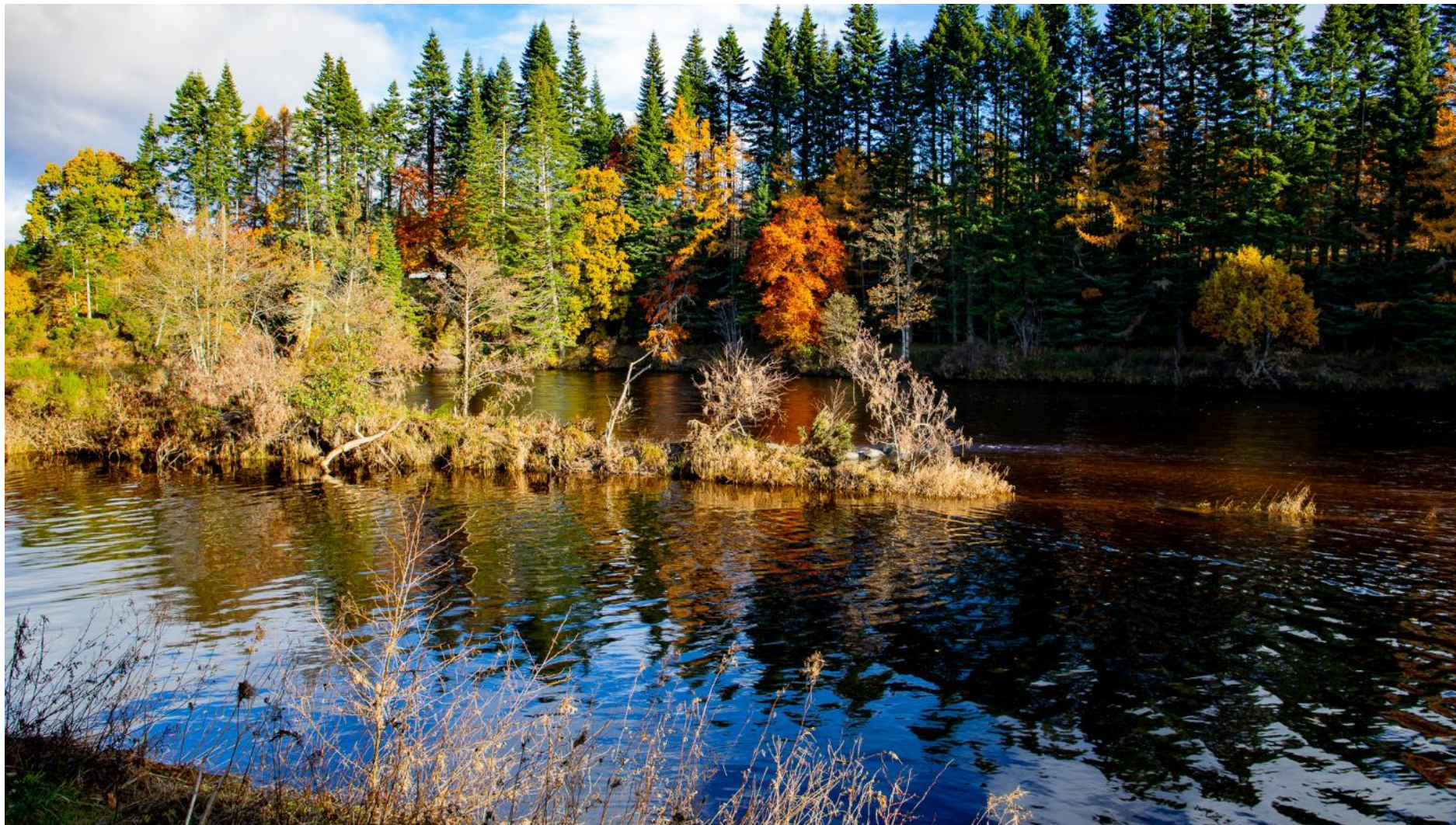
Tail of Bridge Pool to Dowally Stream



Dowally Stream



Tail of the Island

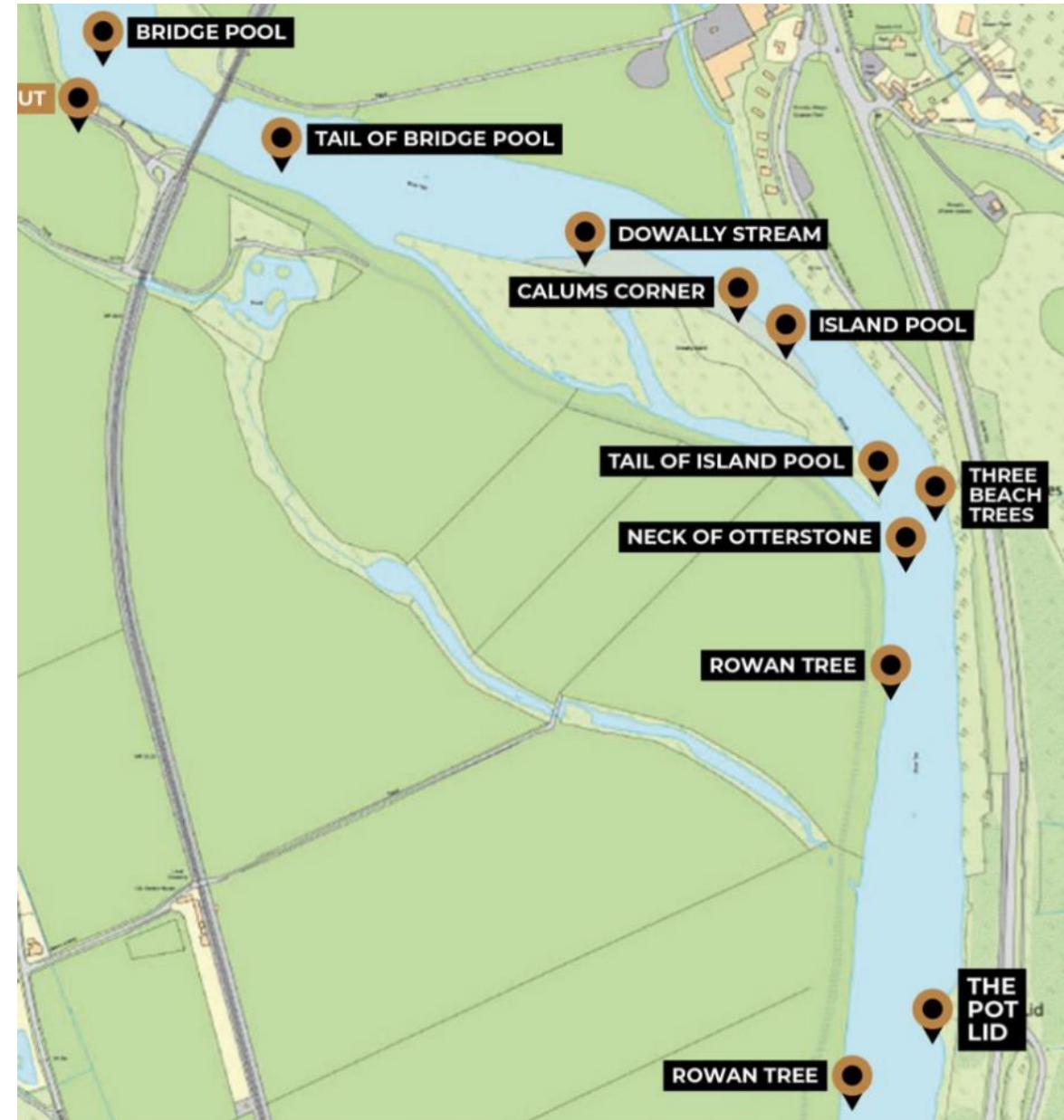


THE OTTERSTONE POOL

A classic big Tay pool, fishes at all heights, and a favoured spot when conditions are right for harling from the boat. At low water the full length of the pool can be waded and fished with the fly. It's an exceptional spring pool, with many a fish hooked at the Rowan Tree at the "Lee of the Island", and in high water well worth covering thoroughly towards its tail. Historically previous riparian owner Mike Smith landed a 46lber during Wimbledon week in this pool.

THE POT LID

The Pot Lid is right at the bottom end of the beat, only recently opened up (it's been the ghillie's secret for many a year) and is a great spot for summer grilse on the fly. A very quick piece of water, so it only really fishes at low flows.



Otterstone



Looking downstream from Tail of the Island to Rowan Tree



Looking downstream through Rowan Tree to Pot Lid

