



# Perth & District Anglers Association

*Scotland's Best Value Salmon Fishing*

**Pitnacree EDIT**





## Access downstream of main Bridge

For the next few months the road is closed (at Kinnaird) except for access. There are cones here.  
OK to park here – on verge





Walk over Bridge to far end – at the end of the railings you will see a dropped rail – climb over and go down path



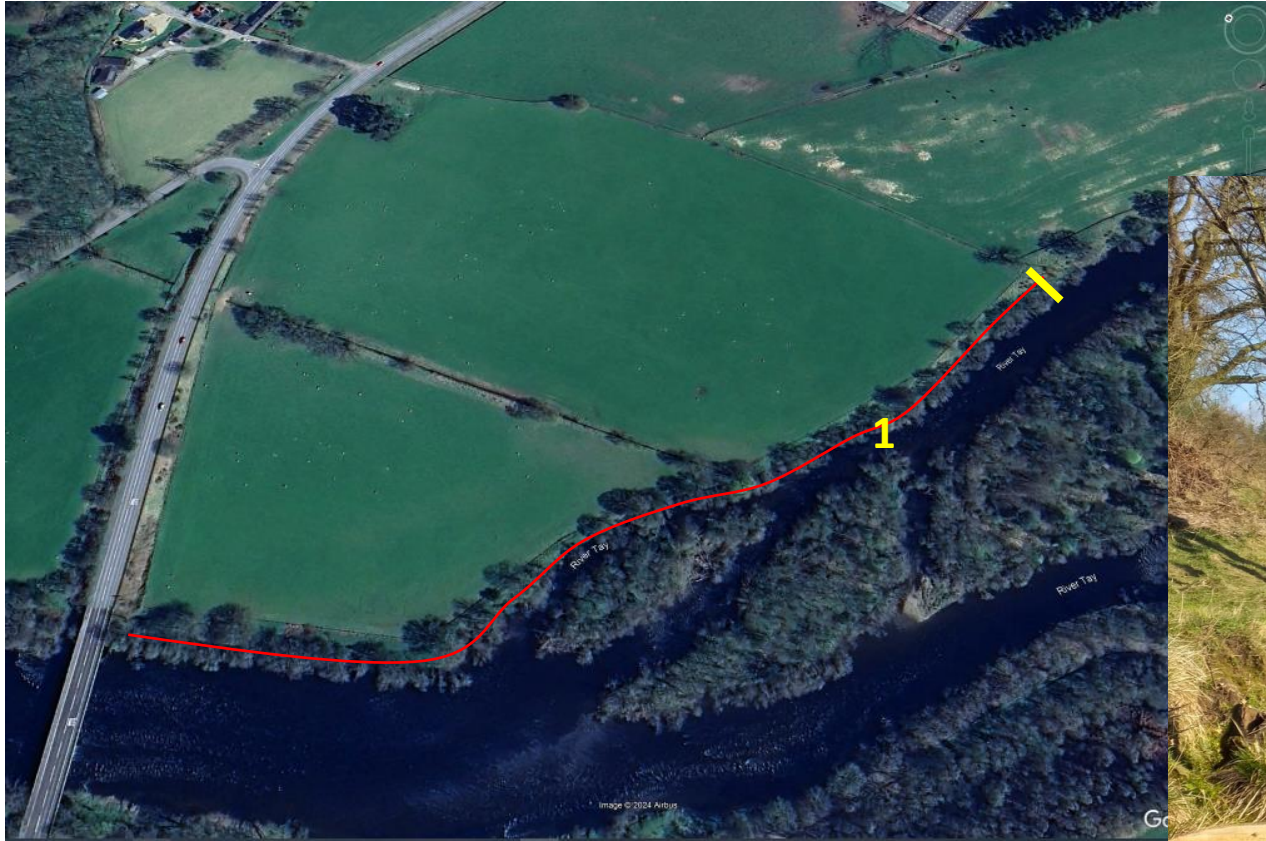


There is a good path all the way along to the left bank bottom march





The ghillie will advise how to fish below the bridge depending on height.  
From point 1 to the March there is nice fly water – photo below was taken with levels at 1.2 metres.  
At this height you can get in the water and wade with care close to the bank. Water gets deeper very quickly





To get to the bottom of the beat on the right bank, the ghillie has cleared the old railway. Access advised by 4WD only. Drive past the cones, heading south towards Kinnaird. Pass “under” the old railway



Approximately 200 yds after the old bridge you will see this kink in the road (A) and a track on the left



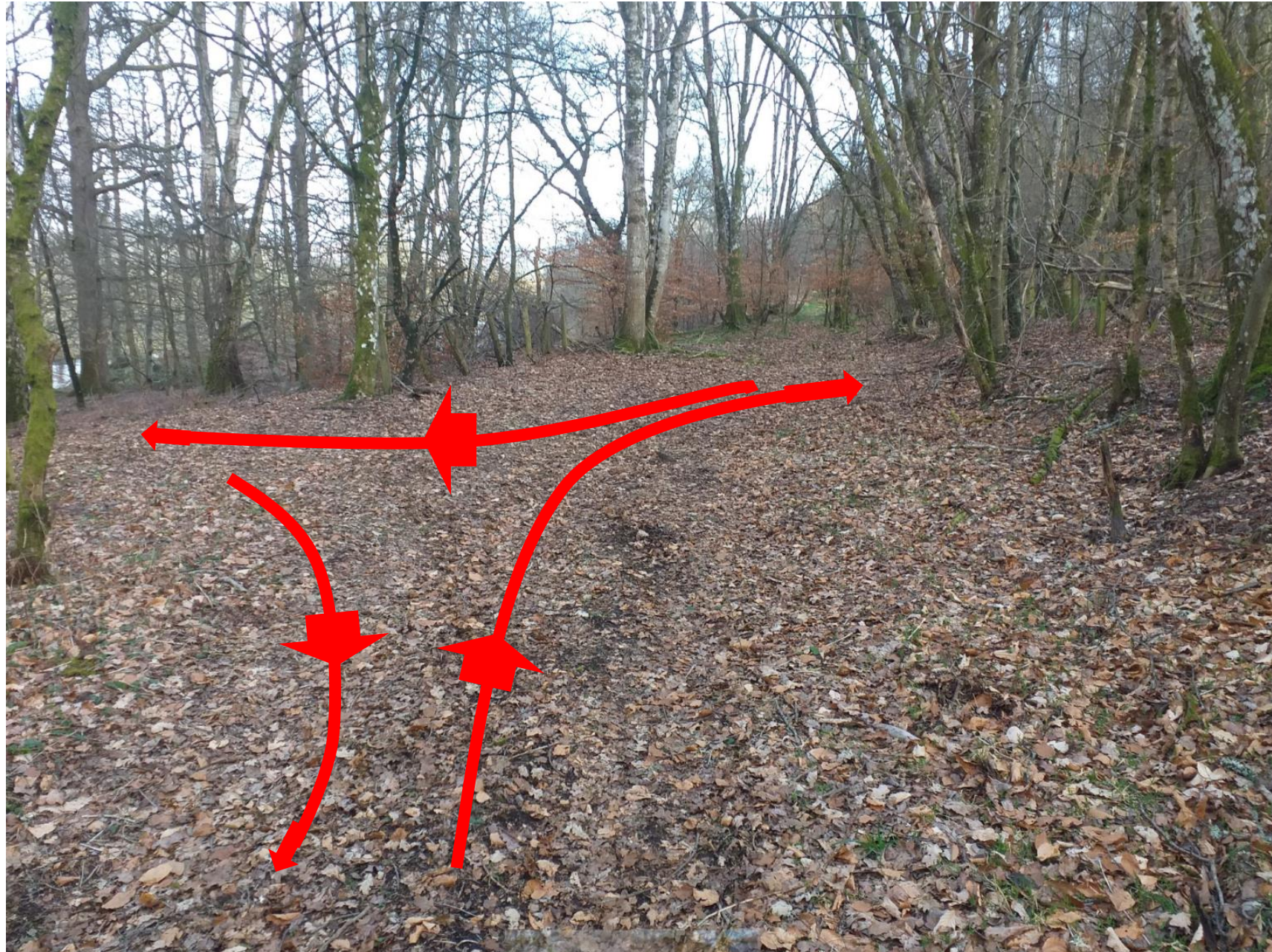
**Turn off road onto track – quite a steep ridge at entrance and turn hard right onto old railway track**



**Follow track until you come to a wide leafy glade on left leading down to river**



To turn go to end of cleared track and do a 3 point turn







# Perth & District Anglers Association

*Scotland's Best Value Salmon Fishing*

**Pitnacree**

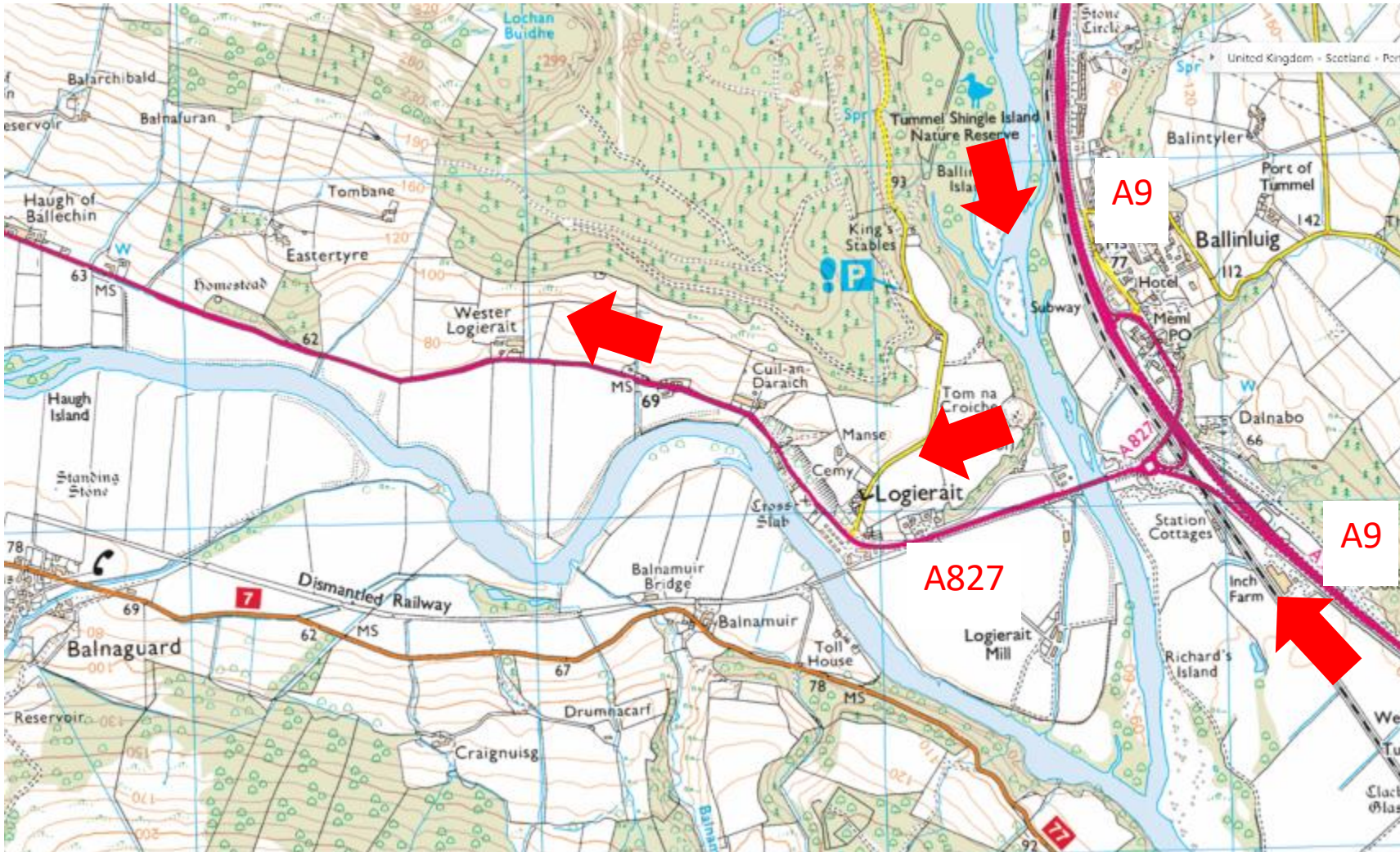




# Pitnacree

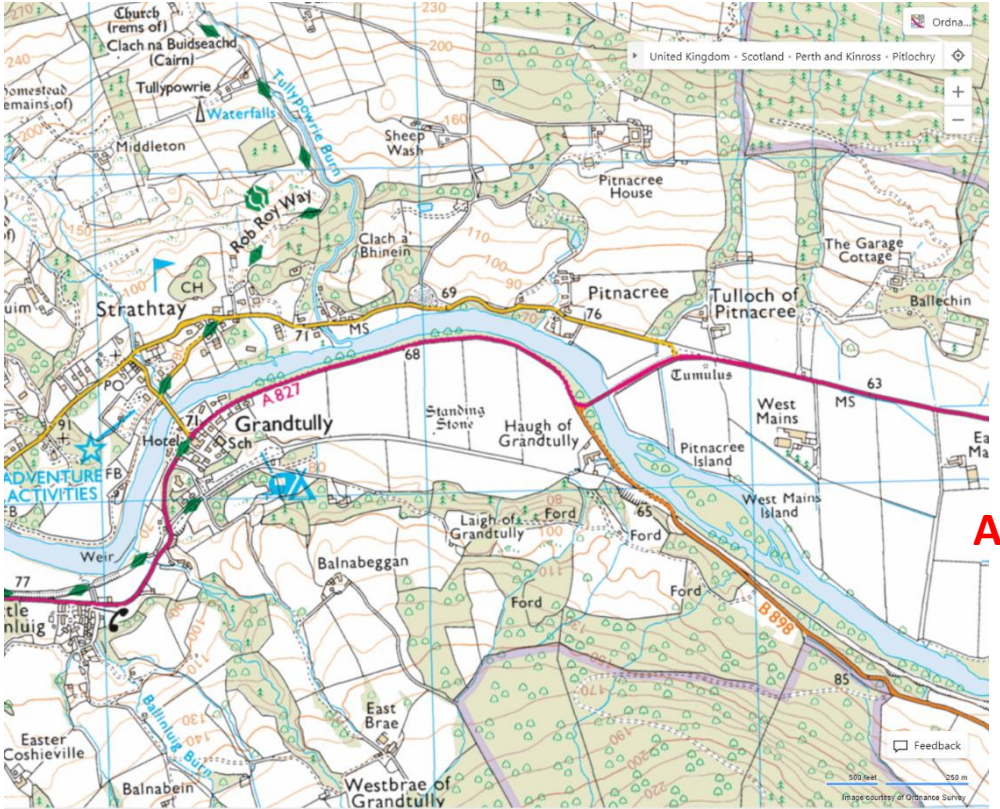
## Getting There:

From the A9 North or South, leave at the Ballinluig junction and take A827 road to Grandtully and Aberfeldy





Continue on A827 until you are just short of the bridge over the Tay. Turn right before the bridge for Pitnacree and Strathtay at point A.





# Turn Right



# Follow Road





From abeam this sign you have 0.3 miles to the parking area





**From ahead this gateway you have 0.1 miles to the parking area – slow down**





Shortly after the gateway you will bear gently right then left and see this:

**Pedestrian entrance to beat**

**Parking Area**





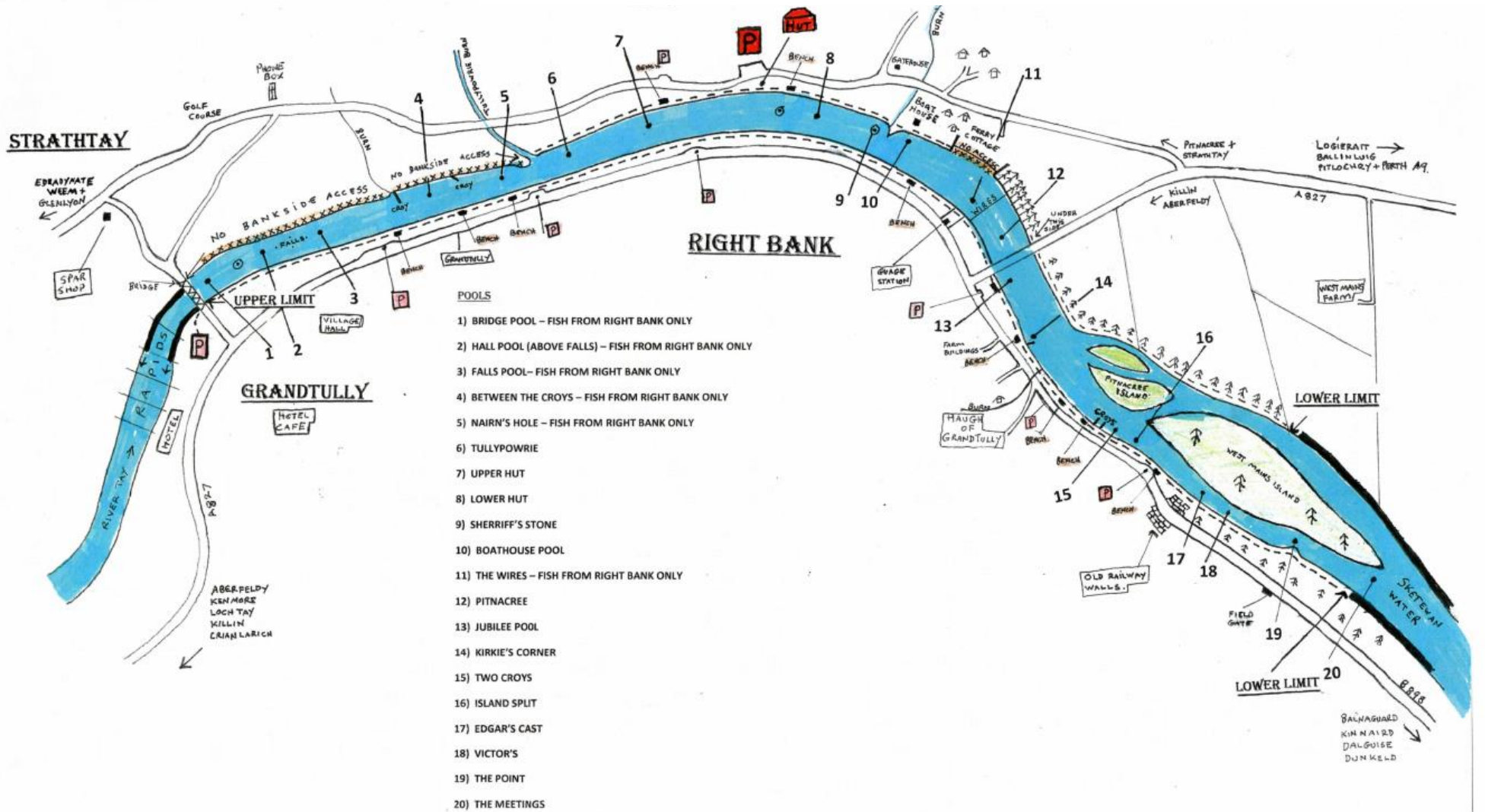
**Parking Area**



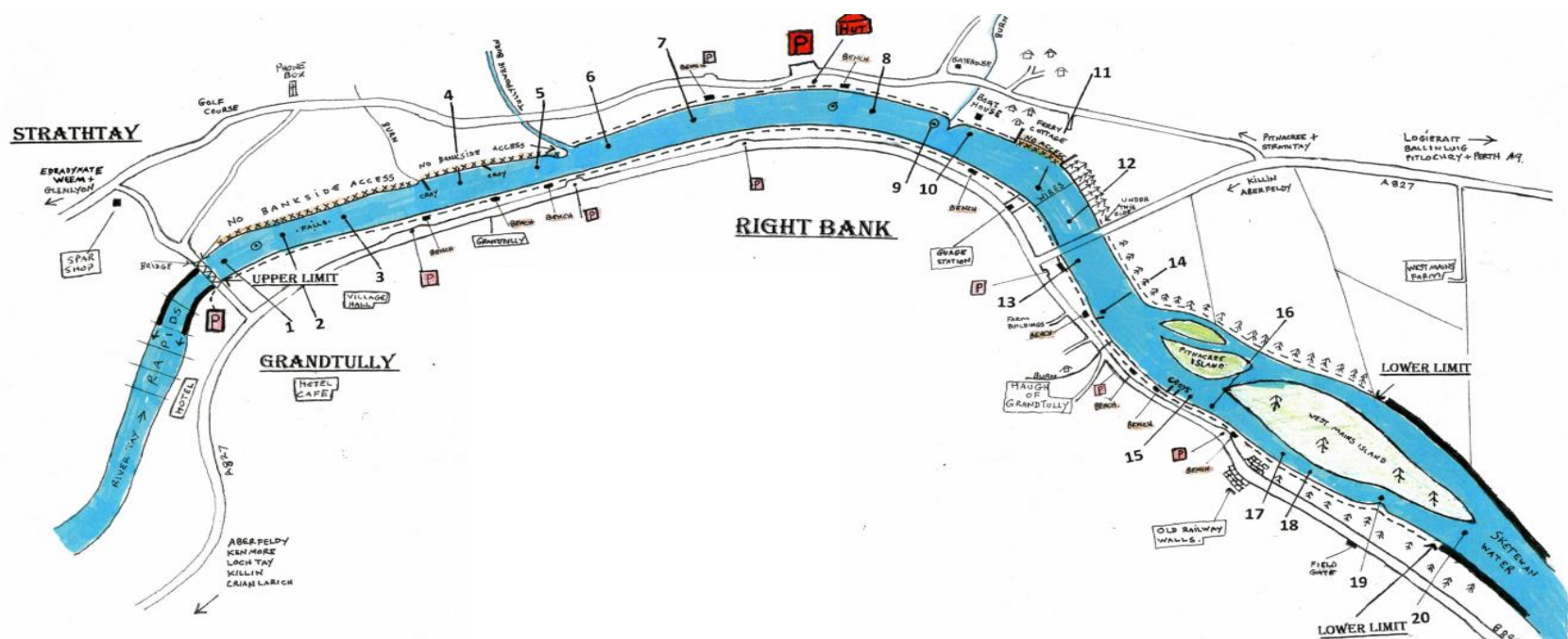


# PITNACREE & BALNABEGGAN SALMON FISHINGS

- Bridge Pool
- Hall Pool
- Falls Pool
- Between the Croys
- Nairn's Hole
- Tullypowrie
- Upper Hut
- Lower Hut
- Sheriff's Stone
- Boathouse Pool
- The wires
- Pitnacree









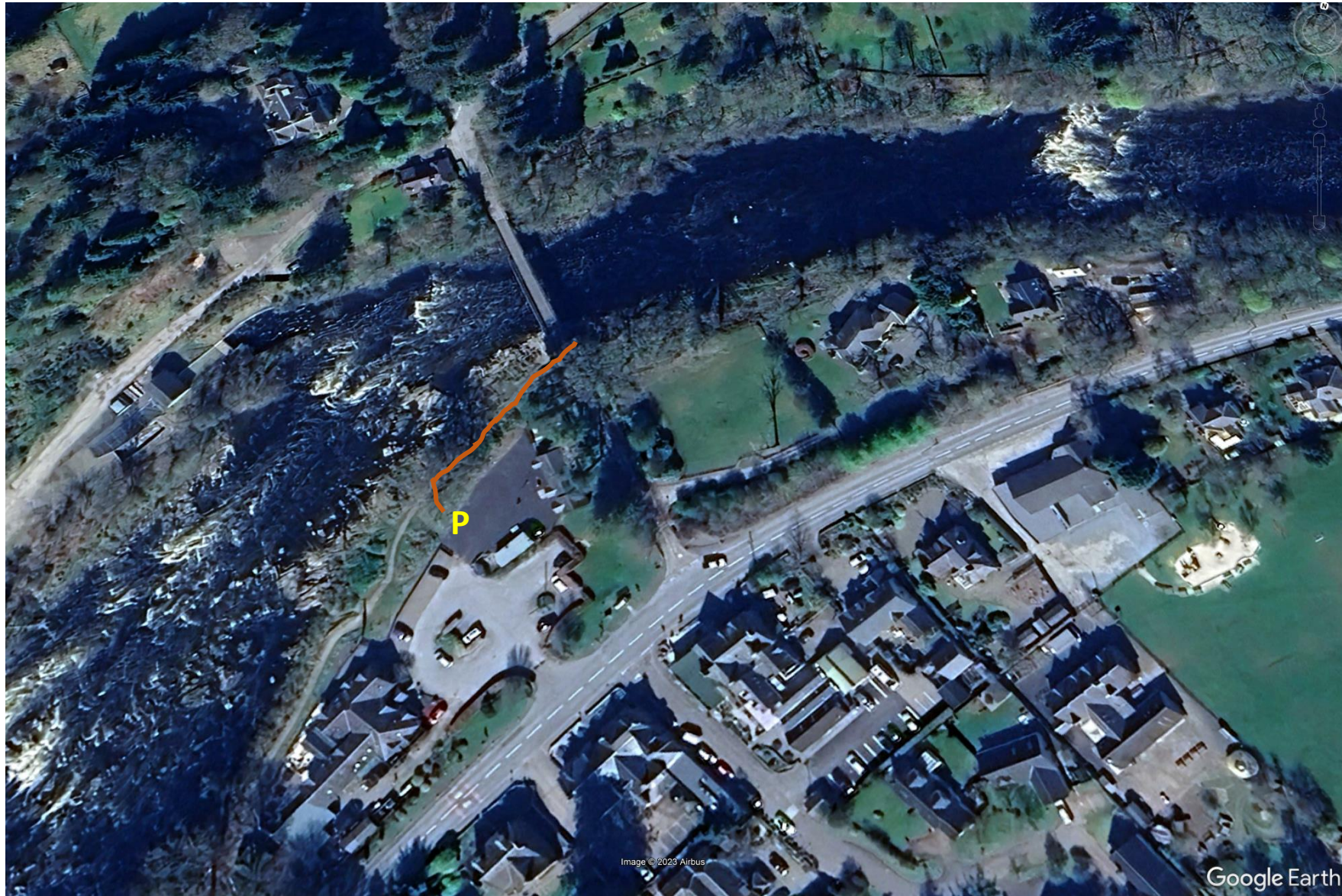
 No bank fishing





Parking Upper Beat

Walk on path to start of beat





**Parking Area**

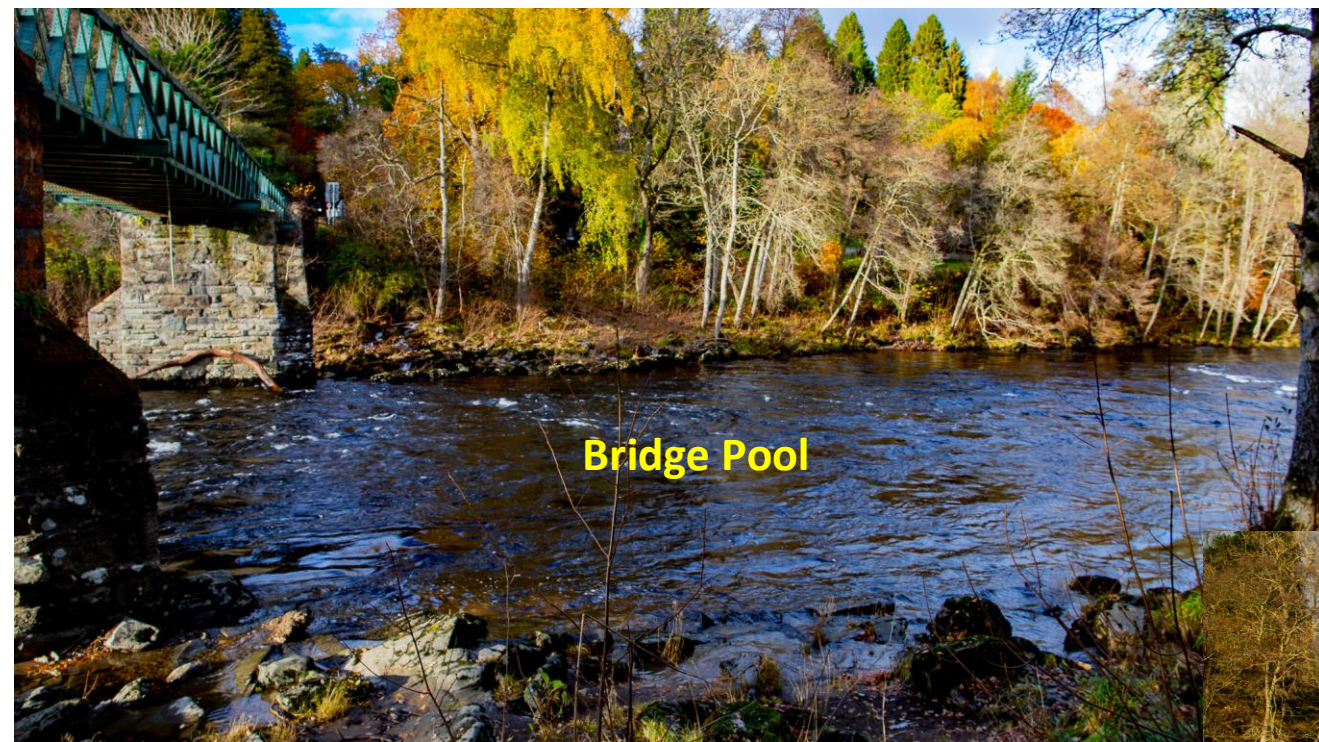




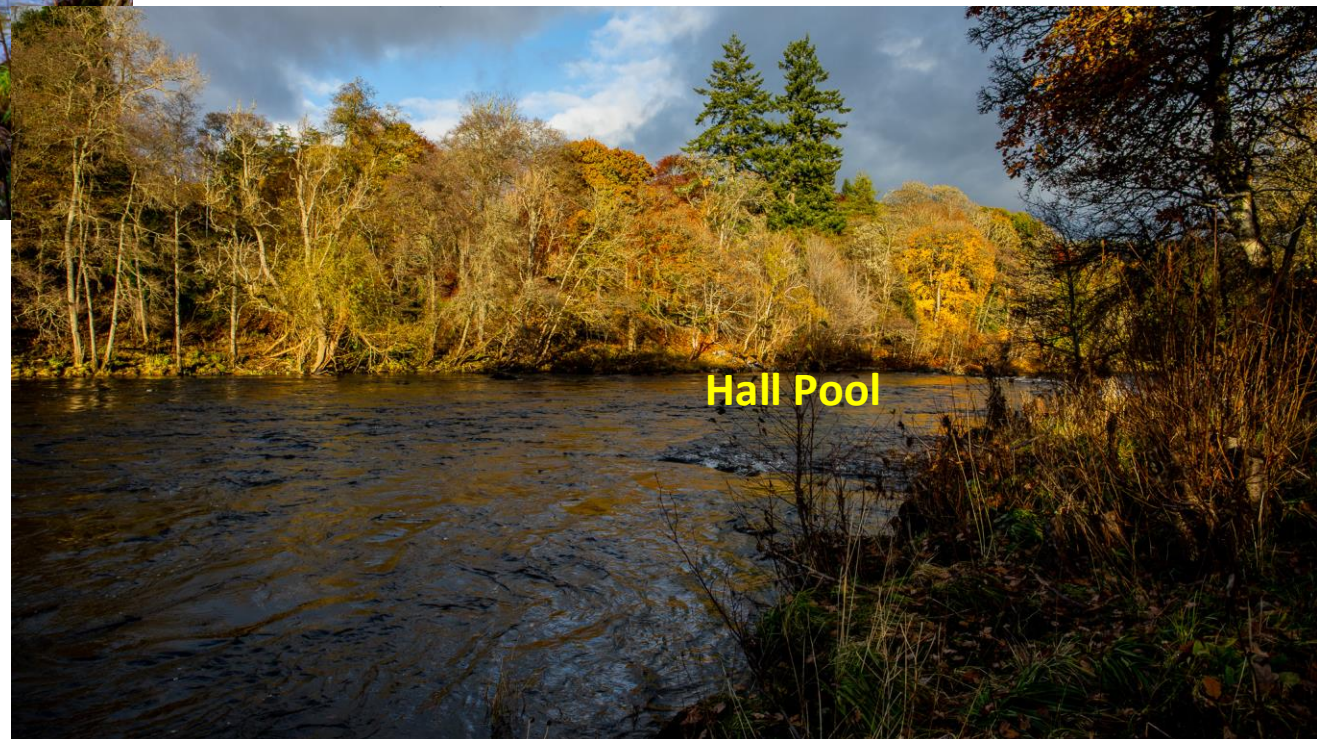
# Upper March







**Bridge Pool**



**Hall Pool**





Tail of Hall Pool

Falls Pool

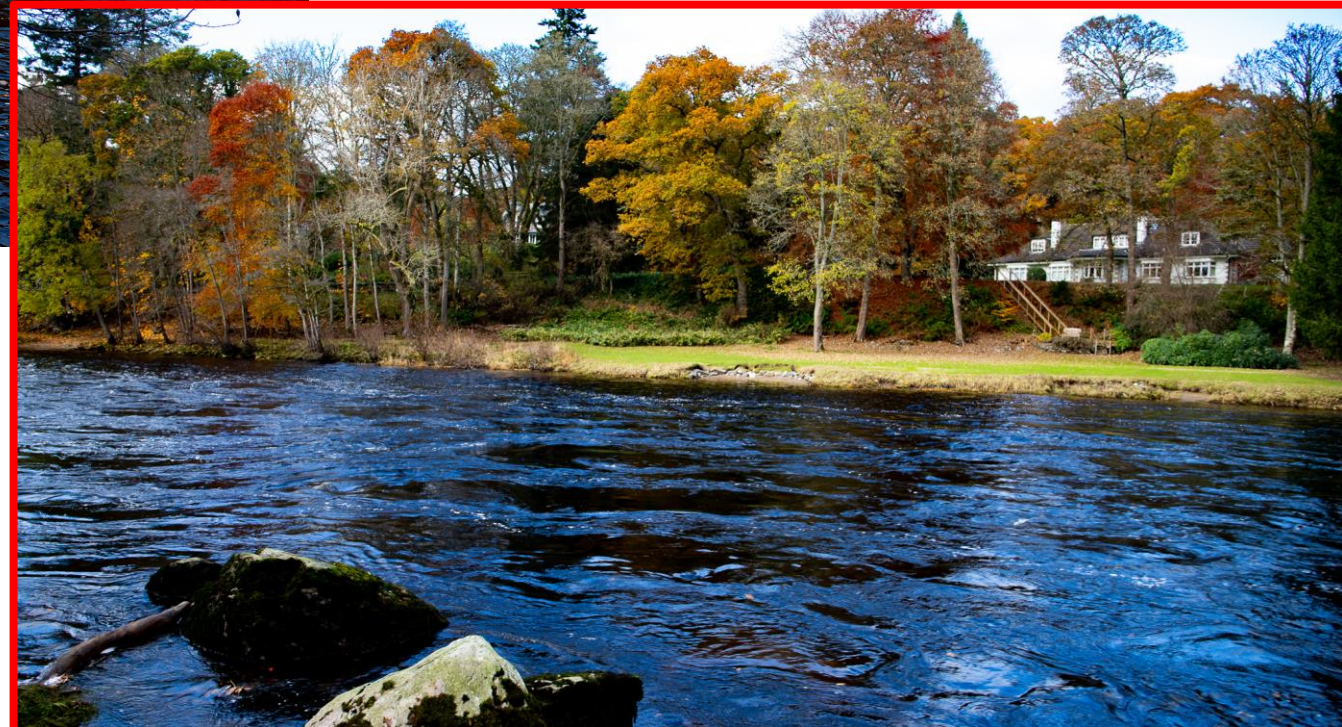


# Leaving Grandtully, Parking for Falls Pool, Between the Croys and Nairn's Hole





## Falls Pool, important holding pool downstream of the Falls and Grandtully Rapids







**Tail of Falls Pool**

**Between the Croys Nairn's Hole**



**Next Parking slot for between the Croys and Nairn's Hole**



**Just after speed signs**





Next parking slot for Tullypowrie to Pitnacree right bank





**Lower Pools**



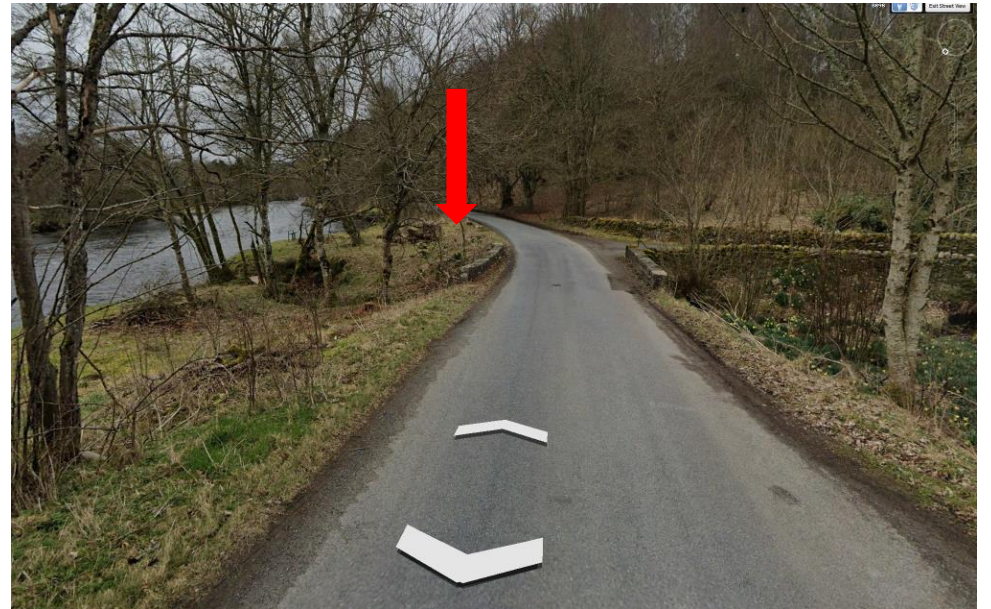


# Lower Parking





# Lower Parking





## Lower Parking





Looking upstream from parking





To get to upstream pools, go back to road from parking area, turn right, cross bridge and re-enter bank







**Jubilee Pool**



**Looking Downstream from parking**







**Island Split**

**Two Croys**





Two Croys





Victor's  
Edgar's Cast



